

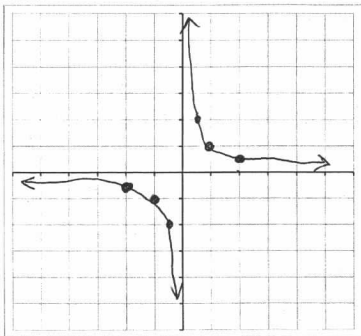
20080211 Quiz 4

Student name:

SOLUTION

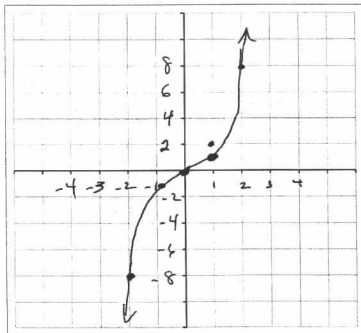
NO CALCULATORS FOR THIS QUIZ!

1. Sketch the graph of $f(x) = \frac{1}{x}$. Use a table and fill out at least 4 points and label them on your sketch.



x	y = f(x) = 1/x
2	1/2
1	1
1/2	2
-2	-1/2
-1	-1
-1/2	-2
0	no point

2. Sketch the graph of $f(x) = x^3$. Use a table and fill out at least 4 points and label them on your sketch.



x	y
0	0
1	1
2	8
-1	-1
-2	-8