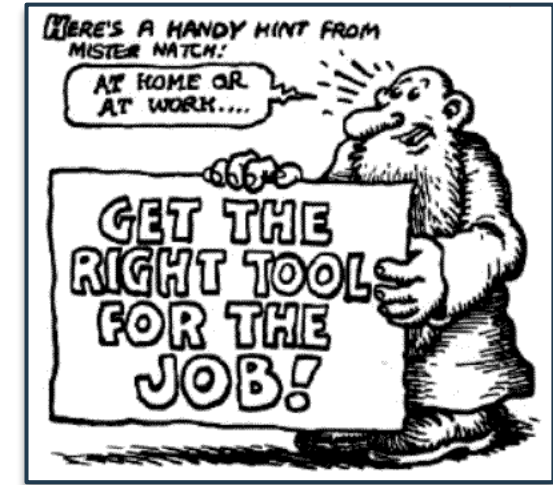




INSTRUCTIONS



Setting Up Your Personal BIT115 Workspace

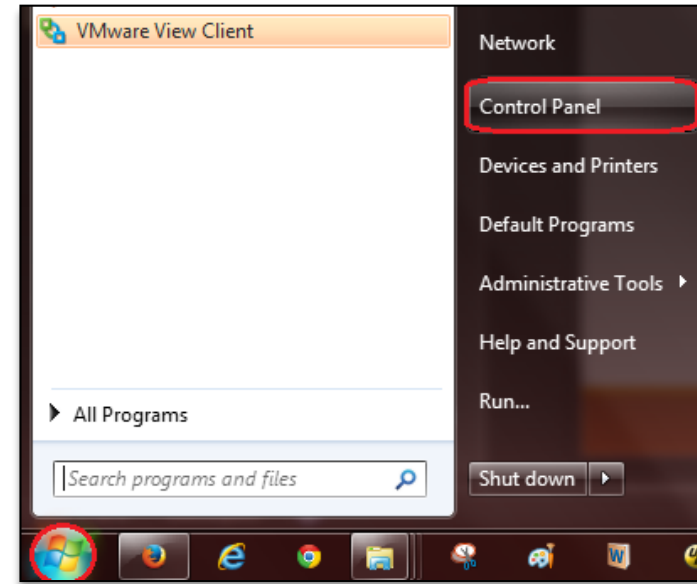
ON WINDOWS, AND A USB THUMB DRIVE OR YOUR LAPTOP



Setting Up Your Windows Computer

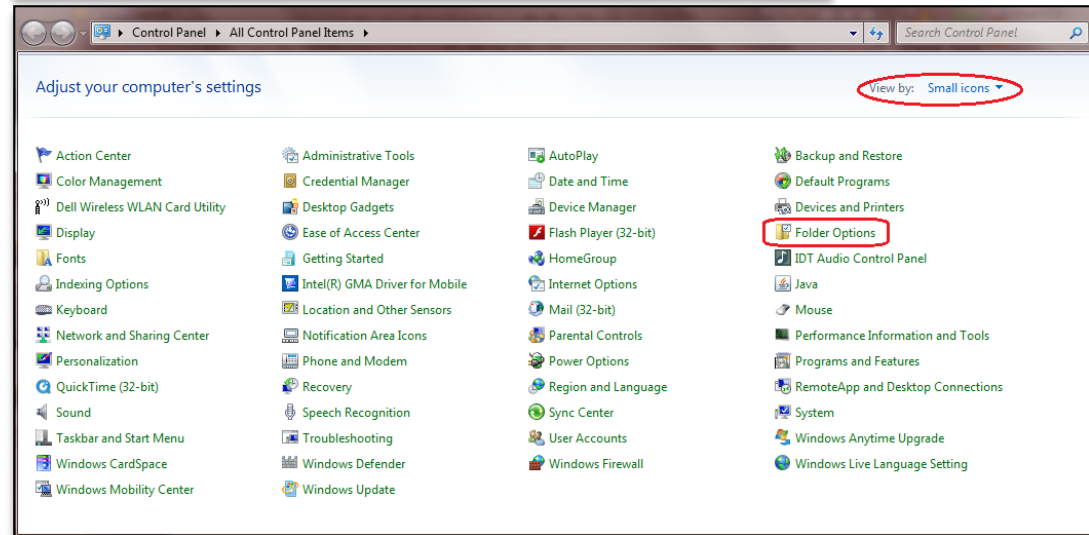
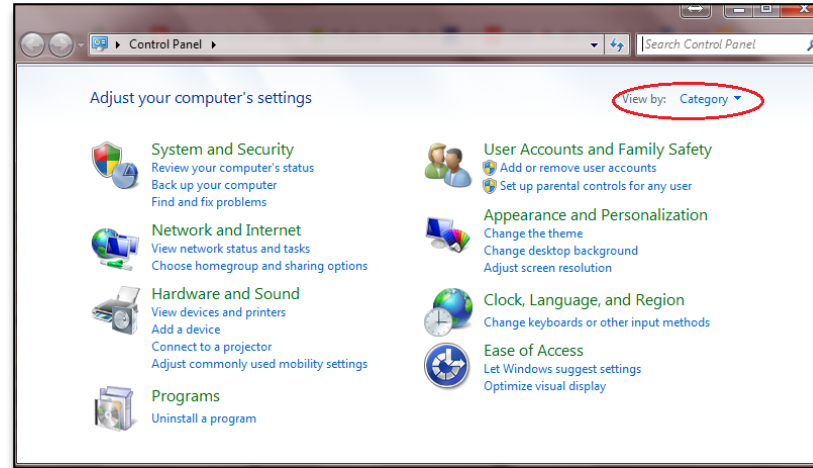
AS DEVELOPERS, you will want to be able to see all your files and all your file extensions (which Microsoft has turned off by default, go figure). Here's what you will need to do to turn them on:

1. Go to **Start** orb and select **Control Panel** from the right-hand column



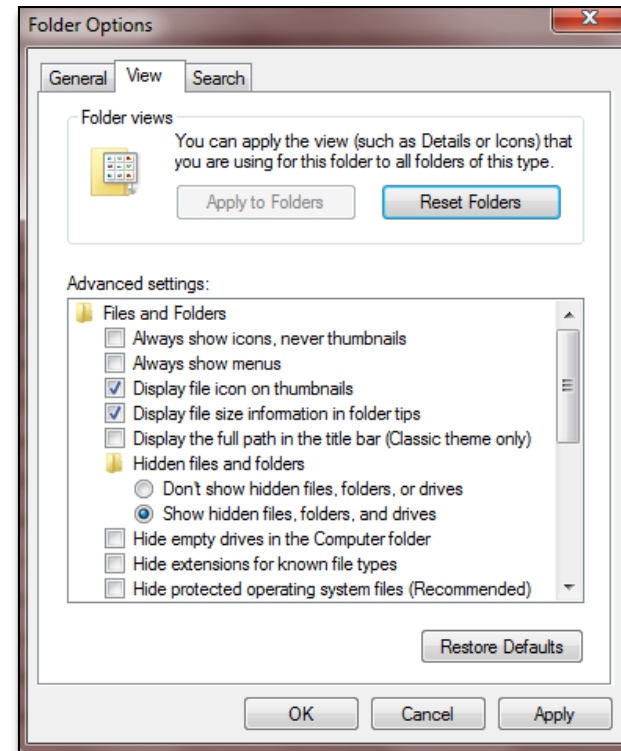
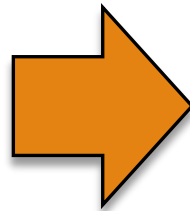
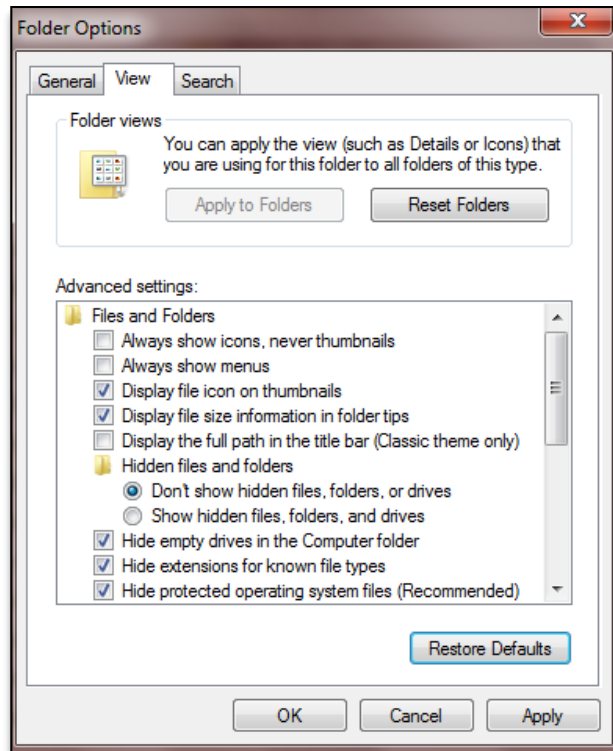
Setting Up Your Windows Computer

- In Control Panel, change **View by: Category** to **View by: Small Icons** then select the **Folder Options** icon



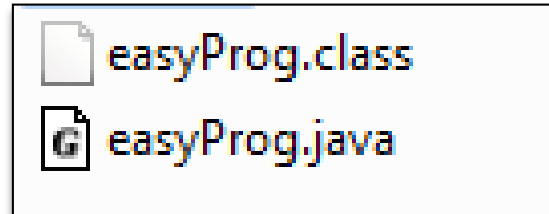
Setting Up Your Windows Computer

3. In the **Folder Options** window, select the **View** tab, then under **Advanced settings**, select Show hidden files, folder, and drives, and uncheck Hide empty drives in the Computer folder, **Hide extensions for known file types**, **Hide protected operating system files (recommended)**, and click **Yes** in the popup warning window, then the **OK** button.



Setting Up Your Windows Computer

4. Now you will be able to see all your **files** and file **extensions**, and easily be able to see the difference between a **.java** file and a **.class** file

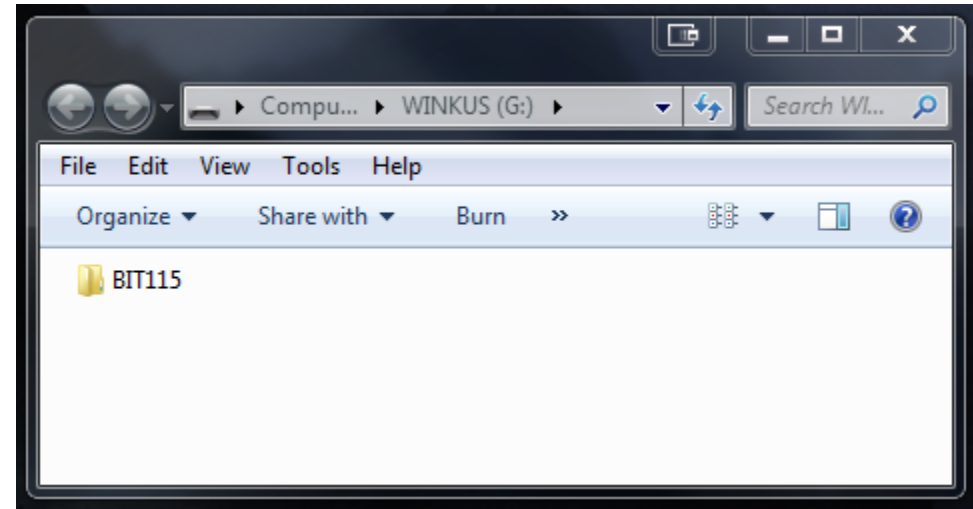


Setting Up Your BIT115 Workspace

Setting Up Your BIT115 Workspace

On a USB THUMB DRIVE or a LAPTOP

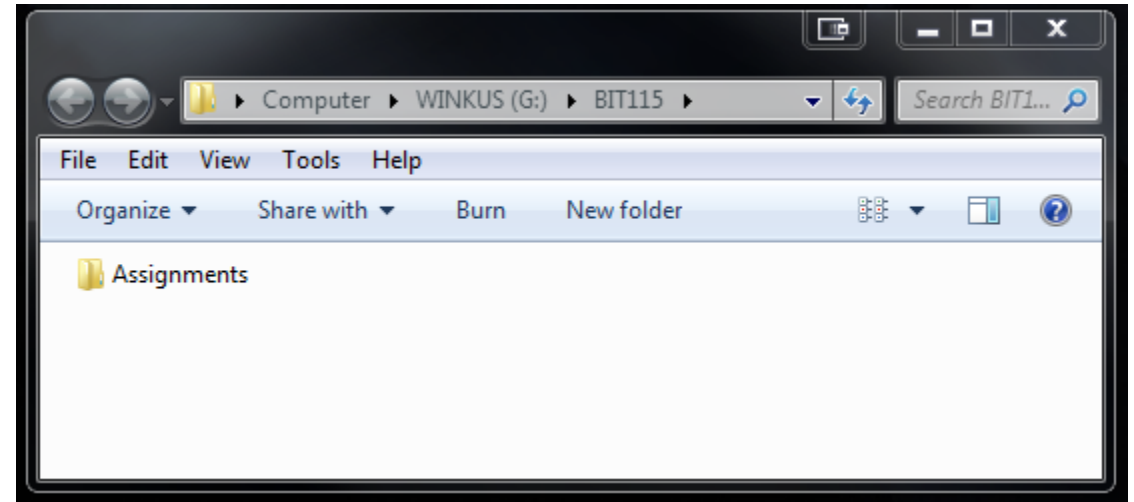
- Open your **USB thumb drive** or **laptop** and create a new folder called **BIT115** where all your work for the quarter will be saved



Setting Up Your BIT115 Workspace

Open the **BIT115** folder

- Create a folder called **Assignments**

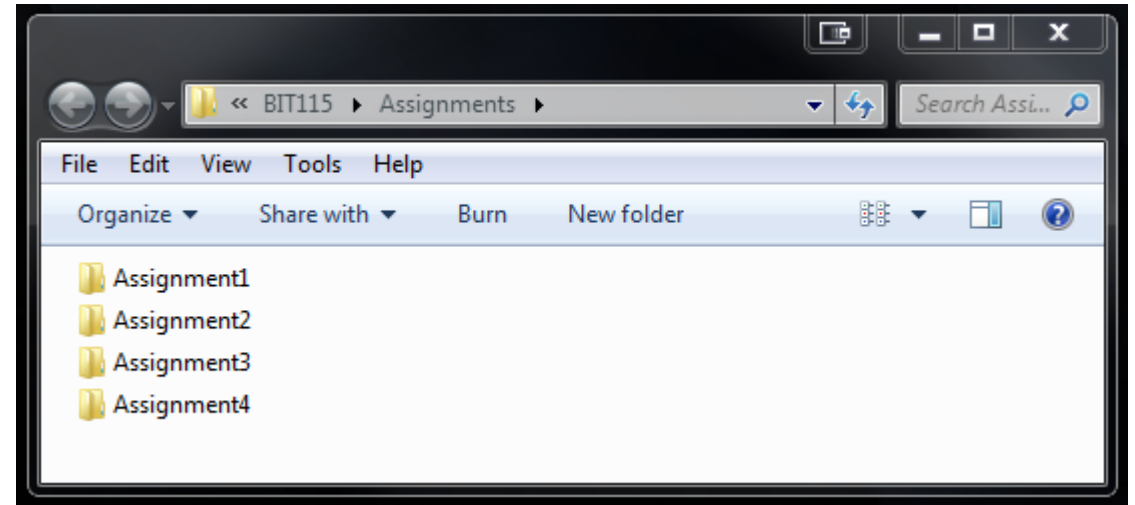


Setting Up Your BIT115 Workspace

Open the **Assignments** folder

- Create four folders called:
 - **Assignment1**
 - **Assignment2**
 - **Assignment3**
 - **Assignment4**

When you have finished creating these four folders, close out of the **Assignments** folder



Setting Up Your BIT115 Workspace

In the BIT115 folder, create a new folder called **ICES**

- Inside the ICES folder create 15 new folders called:

- **ICE02**
- **ICE03**
- **ICE04**
- **ICE05**
- **ICE06**
- **ICE07**
- **ICE08**
- **ICE11**
- **ICE12**
- **ICE13**
- **ICE14**
- **ICE15**
- **ICE16**
- **ICE17**
- **ICE18**

